



**UNIVERSITY  
OF GHANA**

**ghana**  
**TO THE WORLD**  
UG SUMMER PROGRAMME







## INTRODUCTION

Ghana to the World, is a three in one programme, up to 4 weeks, where participants can study and obtain credit, learn about Ghana and Africa as well as experience fun activities on the green campus of the University of Ghana. Using the medium of interactive lectures that seek to immerse students in discussions on Africa centered topics and structured cultural tours, GTW tells the story of Africa from the perspective of Ghana, promotes cross-cultural emersion, and builds international peer networks all over the world.

## Objectives

- Expanding knowledge and understanding of Africa
- Experience African centered instruction from faculty with global exposure
- Immersing oneself in traditional dance, drama and music
- Gain a stimulating and refreshing understanding of understanding of traditional leadership forms and culture
- Get lost in fireside discussions of traditional folktales and their contemporary applicability
- Visit tourist attractions

## PROGRAMME STRUCTURE

The programme focuses on three models:

1. Study (15 hours)
2. Tour Ghana (20 hours)
3. Volunteer (15 hours)

# PROGRAMME STRUCTURE

## STUDY & OBTAIN CREDIT

The second vital component of the GTW programme is to gain academic knowledge. **This comprises of five (5) main modules: Ghanaian Language and Culture (GLC), Transatlantic Slave Trade (TST), Public Health (PH), Performing Arts (PA) and Gender and Development (GD).** GLC is the core course with TST, PH, PA and GD serving as optional electives. All participants take the GLC core course and choose one elective based on personal interest and professional goals. The academic content consists of lectures, group discussions, and experiential learning tours. Each module is worth (6) credit hours.



### GLC: Ghanaian Language and Culture

This module is a major core course and mandatory for all participants. The course will expose students to both theoretical and practical aspect of Ghanaian language, traditional leadership, and culture. It will equip them with the resources, tools and methods for an enhanced understanding and appreciation of the first sub-Saharan country to attain independence, Ghana.

### TST: Transatlantic Slave Trade

This course examines the collective memory of the Transatlantic Slave trade in Ghana. Participants will gain an understanding of the Trans-Atlantic Slave Trade from the Ghanaian perspective, explore Ghanaian views on the history of slavery as compared to African Americans perspectives on slavery and acquire knowledge regarding Ghanaian understandings of the African Diaspora and ultimately understand the ways in which the history of slavery and the Trans-Atlantic Slave Trade are a part of Ghanaian identity today.



### PH: Public Health

This module serves as an introduction to the health system in Ghana. It will place special emphasis on current health issues from the daily lives of Ghanaians to highlight relevance of public health. It provides participants with both theoretical and hands on experience in the health sector, in order to understand public health issues in Ghana.



## PA: Performing Arts

The course will explore the multi-and interdisciplinary nature of the Performing Arts with specific focus on music, dance, and drumming. Participants will develop skills in dance technique, choreography, group work performances which will increase their flexibility, strength and stamina in physical fitness. The module will also allow participants to gain knowledge in dance history and philosophies through written work, videos and documentaries.

## GD: Gender and Development

The module will familiarize participants with main analytical debates in the field of gender and development. Perspectives such as women in development, gender and development which are critical issues in gender and development studies will be explored. Participants will learn conceptual approaches to households, men and masculinities in development, globalization and women employment.



## TOUR GHANA

This model is designed to enable participants engage in experiential study and cultural tours of four regions in Ghana while savouring their culinary delights. In the Ashanti region you will visit the home of the kings of Ashanti, weave the traditional kente cloth, visit the Kejetia station and create the unique adinkrah symbols of the Akan people. The Central region offers a once in a lifetime experience of the rainforest and braving the suspension bridges in the Kakum National Park as well as a guided tour of the first Portuguese slave fort in Africa (El Mina) and other colonial forts (Cape Coast castle).



Adventurous participants can test their stamina while climbing the Aburi hills in the Eastern region after which you will immerse yourself in the art of wood carving. Change your pace and embrace Ghana's ecodiversity in the Volta region as you interact with the local wildlife in the Tafi monkey sanctuary, hike to the highest mountain in Ghana (Mount Afajato), experience the serenity of the Wli waterfalls and visit the largest man-made lake in the world, Volta Lake. Climax your GTW experience in the capital Accra, Greater Accra region with a tour of several historic sites such as the Kwame Nkrumah mausoleum, Independence square, WEB Du Bois centre, and enjoy the hustle and bustle of the open air Mokola market after which you may stroll through the old commercial hub of Jamestown and its Lighthouse.

# VOLUNTEER

Participants are offered service-learning opportunities for two hours daily at preapproved venues of their choice. All efforts are made to link this practicum to chosen elective areas. This mandatory requirement can be fulfilled at least two times a week at a minimum and three times a week at the maximum. It is worth 15 hours. Participants may choose to volunteer in any of the following verified places:

1. Madina Social Welfare Services
2. Frafraha Foster Home
3. Ark Foundation
4. Open Arms Charity
5. Enslavement Prevention Alliance
6. Hopeline



# ACCOMMODATION



**International Students Hostel (ISH)**



**Guest Centre**



**Diaspora Students Hostel**



**Yiri Lodge**

# PROGRAMME FEES

The entire programme will cost **\$1,995.00 per person up to 4-weeks.**

## Programme fees include:

- Pre-departure information package
- Facilitating accommodation reservation
- Airport pick up from Kotoka International Airport to University of Ghana
- Orientation, Welcome and Closing Dinner
- Tuition Fees
- Lecture Notes/slides.
- Registration Fees
- All transportation to study tour sites in and outside Accra
- Night stays outside Accra
- Lunch during experiential tours
- Entertainment package
- Student Identification Card

- Access to the General University Library and Computer Laboratory.
- Academic Report.
- 24hr Emergency Service and On-site Support
- Concessionary Use of UG Recreational Center
- Insurance coverage for health issues
- Stationery
- Health Insurance Plan
- Souvenirs

## Programme fees does not include:

- Air travel related expenses
- Accommodation
- Personal Liability Insurance

# ACCOMMODATION FEES

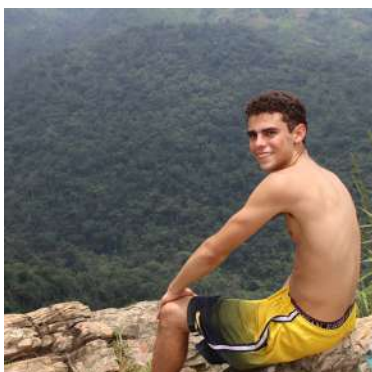
GTW will facilitate accommodation acquisition for participants.

Available Accommodation	Total (USD)
International Students Hostel (ISH)	Single Occupancy - \$18/night Double Occupancy - \$15/night
Guest Centre	Single Occupancy - \$50/night Double Occupancy - \$58/night Single Suite - \$66/night Family Suite - \$192/night
Diaspora Halls	Single Occupancy - \$20/night Double Occupancy - \$10/night
Yiri Lodge	Single Occupancy - \$63/night Double Occupancy - \$72/night

**Duration:**  
up to 4 Weeks

**1st Cohort:**  
3rd - 30th June, 2022

**2nd Cohort**  
1st to 30th July, 2022



**Application Deadline:**  
30th April 2022

**Apply here:**  
[bit.ly/GTW22](https://bit.ly/GTW22)



For more info  
visit our website at: [ipo.ug.edu.gh](http://ipo.ug.edu.gh)  
Or contact GTW team at: [gtwipo@ug.edu.gh](mailto:gtwipo@ug.edu.gh)